

# WHY WASTE WISE SCHOOLS?

Schools play a key role in modelling sustainability. One important step in this process is educating students and the wider community about reducing the resources that are needlessly thrown into landfills and establishing healthy sustainable living habits. While individuals can do a lot, better results are achieved when the whole school makes a commitment to minimising waste and sustainability.

The smart and imaginative solutions that you and your students invent today will help to create a cleaner and healthier world for the generations to come.

Being Waste Wise has many positive outcomes as it:

- promotes a healthy and sustainable lifestyle.
- It conserves natural resources
- builds better public relations,
- promotes teamwork and saves money.
- Its a step towards a circular economic model; infinitely more sustainable than the current take-make-dispose-model we are part of.

**Waste Wise Schools recognise sustainable achievements;**

with an award system that is based on data collected from a waste audit as well as a point system based on successful waste minimisation activities, proven to create a culture change.



**Plastic particles attract chemicals in the ocean**





# Waste Wise

## Membership includes

**Free Waste Audit:** to identify your waste minimisation needs and goals.

**Kaitiaki kit:** to begin your zero waste journey, including;

- The Waste Wise Team book.
- Local Recycling Guide, Compost Booklet.
- Recycling signage and systems installed at cost.
- Our systems will reduce your waste or we will refund your investment!

**Mentorship:** have one of our experts support you and your team on your sustainability journey

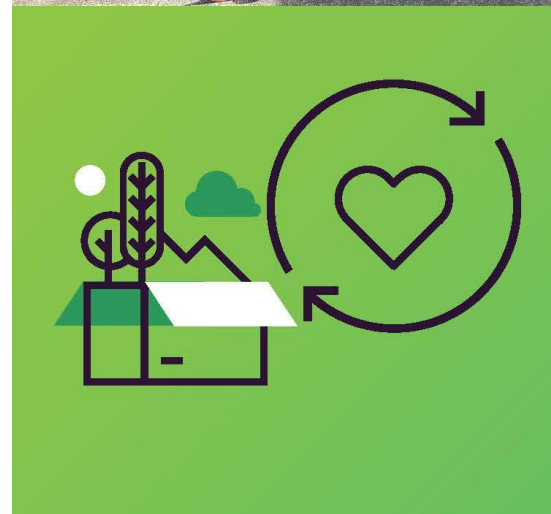
**Tailored Zero Waste Lessons:** how to live great lives with less waste; lessons from the Paptuanuku pack.

**Networking with other changemakers:**

Newsletters, sharing information; as well as networking events with knowledge sharing and external experts.

**Connecting your school with**

- National Recycling Providers, options for hard to recycle waste streams.
- Compostable waste solutions, where feasible.
- Carbon Reduction or offset providers
- fundraising opportunities





# Waste Wise Award Criteria

A business has achieved EcoStar status when their waste strategy is implemented.

Once systems are embedded, second waste audit, together with the performance indicators, are used to develop systems and strategies for further improvement.

A Waste Audit is conducted every year to identify opportunities for improvement.

A Bronze, Silver or Gold rating based on:

**1 point** for each performance indicator attained **plus** the Waste Audit results.

The Waste Audit considers:

**1. The Landfill Diversion Rate**=the percentage of uncontaminated recycling diverted from landfill from your total waste generated.

**Minus**

**2. Waste to Landfill Analysis** = the percentage of recyclables that are in your landfill bins.

The Total Diversion Rate is calculated as a percentage of recyclables going to landfill subtracted from the percentage of correct recycling.

10 points for 80% Total Diversion,

5 points for 60%

2 points for 40%

Waste Wise Rating = performance indicator points + Total Diversion points.

**Gold rating: 24-30 points**

**Silver rating: 15-23 points**

**Bronze rating: 10-15 points.**



# Performance Indicators

- ☐ Waste minimisation is written into staff policy
- ☐ Have zero waste strategies for the day-to-day running of the organisation i.e. reduce printed paper, zero waste cleaning methods etc.
- ☐ Have recycle bins for all accepted waste streams i.e. cardboard, paper, tins, cans, plastics 1 & 2.
- ☐ Food waste recycling. Compost or divert from landfill all compostable waste.
- ☐ Recycle hazardous waste and electronic waste
- ☐ Waste minimisation included in procurement policies.
- ☐ Conducts a zero waste end of year organisation clean-up.
- ☐ Staffroom has a container library
- ☐ Replaced paper towels with more sustainable options

## **Staff involvement**

- ☐ There is a formally designated person/team to manage waste systems
- ☐ There is an Eco team: a group that takes ownership of, and leads sustainability within the organisation,
- ☐ Participate in waste minimisation events such as Keep New Zealand Beautiful week and community clean-ups etc.
- ☐ Recognise staff who lead or participate in Kaitiaki activities.
- ☐ Staff are incentivised to recycle e.g. paper, toner cartridges



# Six Simple Steps to Sustainability

## Step 1

Waste Wise team is formed and named.  
Waste audit is conducted.

## Step 2

Sustainability vision is created.

## Step 3

Waste strategy is developed

- key issues and goals are identified
- zero waste workshops are attended.

## step 4

Implement strategy in a well thought out manner through communications and presentations. Ensure strategy aligns with long term goals.

## step 5

Evaluate progress and against targets and outcomes. Adjust goals if required. Monitor and evaluate progress.

## step 6

Annual reporting on performance indicators, activities and outcomes.

# Recycling Strategies

It's important to remember that effective recycling systems must be obvious, easy and accessible. When a system is not easy to use, recycling won't happen. Grouping bins, colour coding and labelling are all part of creating an easy and obvious system.

## Paper recycling bins in offices:

- A landfill bin should be placed next to each photocopier as the wrap most paper is delivered in is not recyclable.
- Toner cartridge recycle boxes can be placed next to the photocopier. The servicing agent often has a free service



**Food waste:** A small interior recycling station with a food scrap and compost bin in the kitchen, staff room, and anywhere food is consumed will reduce your waste by an average of 35%

**Staff areas.** A little effort and signage ensures a high rate of diversion. The staff rooms and areas where staff eat should have a food scrap bins and/or a compostable bin. All areas that generate mixed recycle should have mixed recycle bins.



No standalone waste bins. This means every waste bin should be next to a recycle bin. There should be an exterior recycling station for pick up by your waste disposal provider. Some providers charge a weekly rental for bins, others provide bins free of charge.

## Recycling set up for transfer Stations:

This is where recycling would go before it is sent to a transfer station. Cardboard recycling needs to be kept under shelter. A Cardboard recycle Wool Bale or bin could be installed. It could have a key on a hook; this breaks the sellotape on the boxes, making it simple to break them down. Each waste stream needs to be separated before being sent to a transfer station, you can build bins for each waste stream out of metal or wood, and use wool bales as an affordable recycling station, a sorting table is a useful addition to the station.





## Bin options for various budgets .

**Good systems include grouped bins, colour coded and well labelled.**

### **Friendlypak stacker bins**

@ \$49/35 litres

@ \$55/45 litres

\$147/\$165 a 3 bin  
recycling station.

### **Method recycling bins**

@ \$316 per bin

\$948 a 3 bin  
Recycling  
station



### **Sulo office waste watcher recycling station**

\$245 a bin

\$735 a 3 bin  
recycling station.



### **Taurus Stacker Bin**

@ \$22 a bin

\$66 a 3 bin  
recycling  
station.



### **Port Nicholson corflute recycling bins**

@ 24 each

\$72 a 3 bin  
recycling station



### **Buckets**

@\$1.50 each = 4.50  
a recycling station!



**Worm farms  
Bokashi  
bins**

@ \$100

including  
worms



**The New  
Zealand Box  
rodent proof  
compost**

@2400  
each bin



**Compost  
bin**

\$69 each.

rodent  
proofing \$45



**Sulo 240 litre  
wheelie bins**

@ \$90

\$540 a 3 bin  
recycling station.



**Exterior 120 litre wheelie bins @  
\$83 per bin.**



**Corflute Cube  
\$6.50 each**



**Tarus Cube.  
@\$8 each**



**Hungry Bin  
worm farm  
\$300**



**Food scrap bins  
large \$14  
small \$10**

